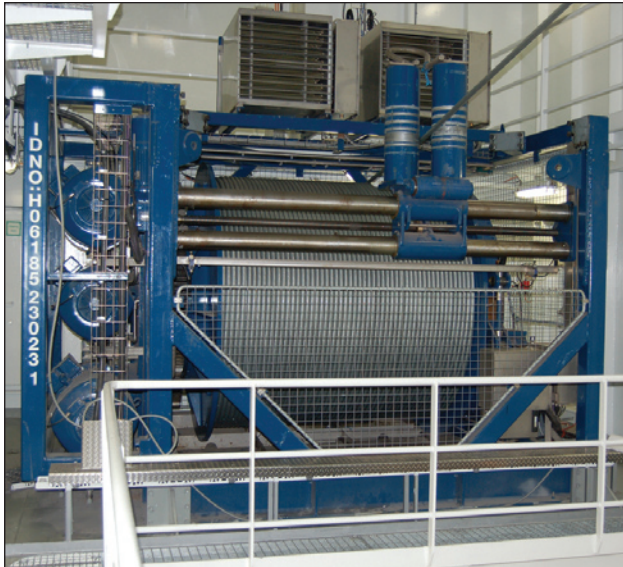


# Active heave compensation winches

## AHC



### Description

Active heave compensation winches filter out the effect of wave movement, allowing for more accurate data readings, increasing equipment safety and reducing weather-related down times. MacArtney's precise systems prevent unwanted undulation or heavy sea movement causing sudden slack or pull on the cable, stressing the cable and making the equipment at the end of the umbilical unstable.

MacArtney's engineering specialists use a unique, precise calculation programme that accurately predicts the behaviour of the ship and ROV in all sea states. Using a wide range of actual data on the vessel, MacArtney can offer an AHC winch for any vessel type that can accurately position a vehicle in relation to surface, seabed or underwater installation even in heavy seas.

Maximum stability with minimum power  
Electric powered winches are far more efficient and eliminate electric to hydraulic conversion loss. Their successful range of winches bypasses any need for hydraulics, ensuring optimal system function and efficiency.

They are also quieter than their hydraulic counterparts, making operating the machinery more comfortable for the crew on board. They are easier to service and there is no risk of oil pollution due to hydraulic oil leakage.

For further information please visit: [www.macartney.com](http://www.macartney.com)

### Features and Benefits

- 90% heave compensation accuracy
- Incorporated, compact protection frame
- Frame mounted control panel and remote control
- Electric motor driven level wind
- Variable speed
- Fail safe brake
- PLC control (programmable logic controllers)
- Interface for external MRU (motion reference unit)
- IP56 protection for electrical parts
- Fork lift slots and pad eyes for lifting
- Prepared for Focal electric/fibre optic slip ring

### PLC optional modes

- Reduced sensitivity joystick for on-deck handling
- Stop at pre-programmed depth
- Emergency recovery
- Automatic stop when 8 turns remaining on drum

### Applications

- ROV systems
- Trenchers
- Subsea pumps
- Coring and piling systems

### System options

- ILO certification of lifting points
- DNV certification of lifting points
- Full DNV certification of the winch system
- Water cooling of umbilical
- Sacrificial sea-fastening brackets
- Cable status indicator showing deployment length and speed

Other options are also available.

